

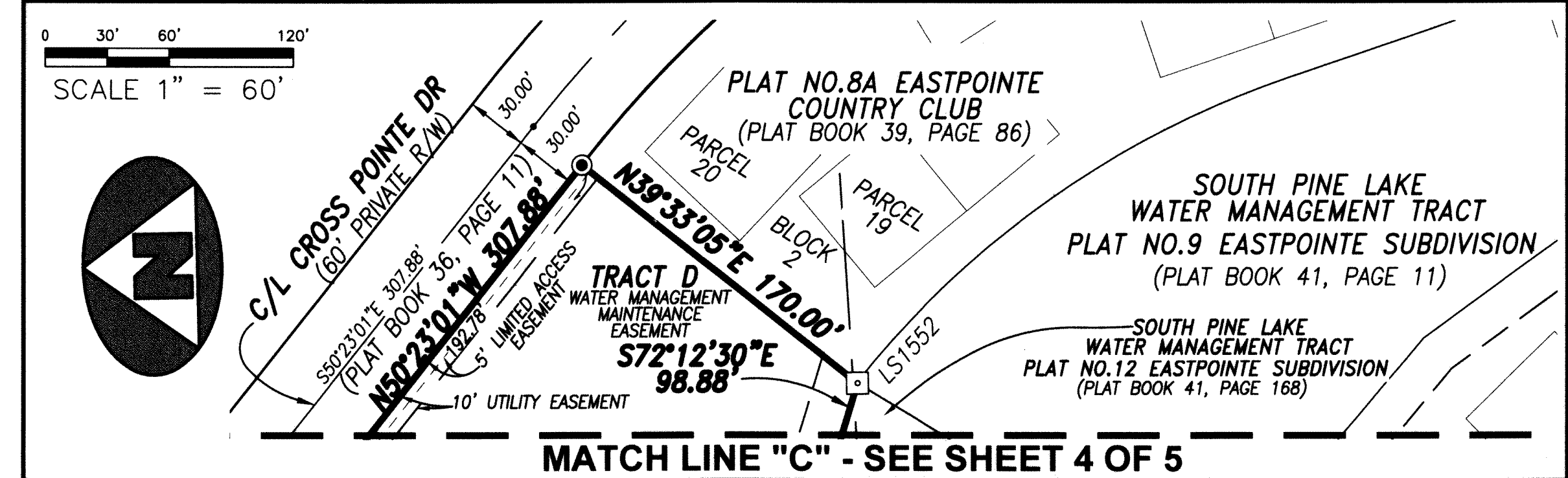
**ASSOCIATED LAND SURVEYORS, INC.**  
 801 NORTHPOINT PARKWAY, SUITE 35  
 WEST PALM BEACH, FL 33407  
 PHONE: (561) 848-2102 FAX: (561) 844-9659  
 LB NO. 7344 EMAIL: als@alssurvey.net

**EASTPOINTE COUNTRY CLUB PUD PLAT 15**

**SHEET 5 OF 5**

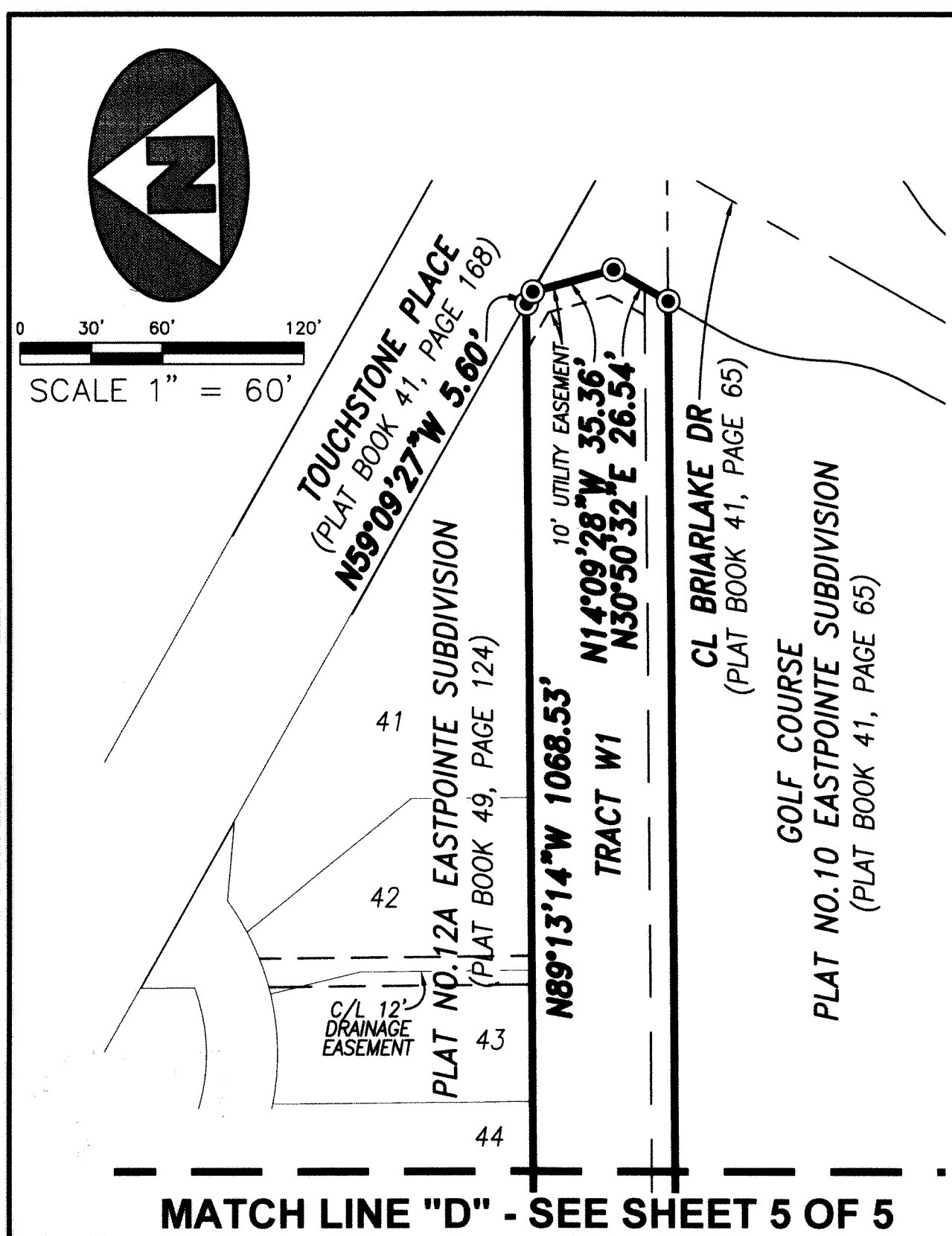
BEING A REPLAT OF TRACTS "C", "E", AND THE WATER MANAGEMENT TRACT, TOGETHER WITH TRACT "B", OF PLAT NO. 14 EASTPOINTE SUBDIVISION, AS RECORDED IN PLAT BOOK 56, PAGE 29, PUBLIC RECORDS OF PALM BEACH COUNTY, FLORIDA; ALSO TOGETHER WITH A PORTION OF THE WATER MANAGEMENT TRACT AND GOLF COURSE, AS SHOWN ON PLAT NO. 12 EASTPOINTE SUBDIVISION, AS RECORDED IN PLAT BOOK 41, PAGE 168, SAID PUBLIC RECORDS; ALSO TOGETHER WITH A PORTION OF TRACT "H", PLAT NO. 14A EASTPOINTE SUBDIVISION, AS RECORDED IN PLAT BOOK 59, PAGE 136, SAID PUBLIC RECORDS; LYING IN SECTION 27, TOWNSHIP 41 SOUTH, RANGE 42 EAST, PALM BEACH COUNTY, FLORIDA

13



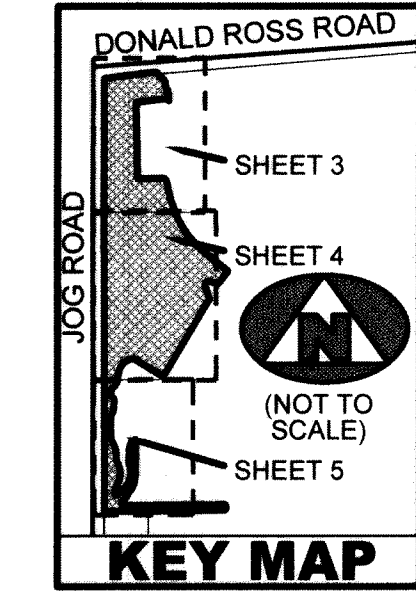
**PREPARING SURVEYOR & MAPPER'S STATEMENT**  
 THIS INSTRUMENT WAS PREPARED BY STEPHEN L. SHIRLEY, PROFESSIONAL SURVEYOR AND MAPPER NO. 3918, IN AND FOR THE OFFICES OF ASSOCIATED LAND SURVEYORS, INC., 801 NORTHPOINT PARKWAY, SUITE 35, WEST PALM BEACH, FL 33407

**MATCH LINE "D" - SEE SHEET 5 OF 5**



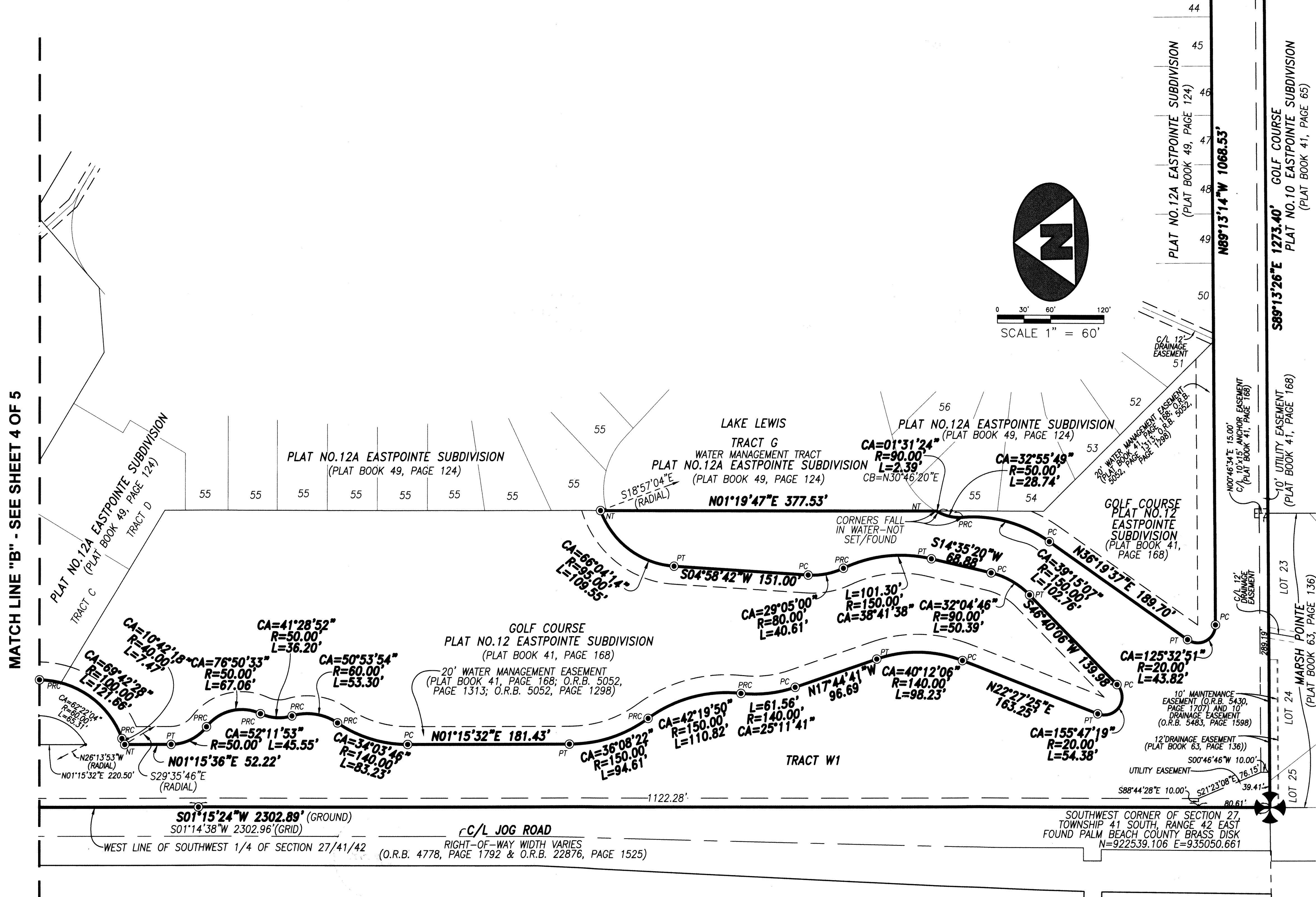
**NOTES**  
**COORDINATES, BEARINGS AND DISTANCES:**

1. THE BEARING BASIS (BASE BEARING), AS SHOWN HEREON, IS BASED ON THE ASSUMED BEARING OF SOUTH 01°15'32" WEST, ALONG THE WEST LINE OF PLAT NO. 14 EASTPOINTE SUBDIVISION, AS SHOWN HEREON, AND ALL OTHER BEARINGS ARE RELATIVE THERETO. BEARING ROTATION PLAT TO GRID IS 00°00'46" (COUNTERCLOCKWISE).
2. THE COORDINATES SHOWN HEREON ARE STATE PLANE GRID COORDINATES ACCORDING TO THE TRANSVERSE MERCATOR PROJECTION OF THE FLORIDA EAST ZONE, N.A.D. 83, PER THE 1990 ADJUSTMENT.
3. THE LINEAR DIMENSIONS SHOWN HEREON ARE GROUND DISTANCES IN U.S. FEET AND DECIMAL PARTS THEREOF, UNLESS NOTED OTHERWISE.
4. THE GROUND DISTANCE TO GRID DISTANCE SCALE FACTOR IS 1.0000303 (GROUND DISTANCE x SCALE FACTOR = GRID DISTANCE)



**LEGEND**

□	FOUND PERMANENT REFERENCE MONUMENT	PCC	POINT OF COMPOUND CURVATURE
■	4"x4" CONCRETE MONUMENT STAMPED AS NOTED	PRC	POINT OF REVERSE CURVATURE
■	FOUND PERMANENT REFERENCE MONUMENT	PT	POINT OF TANGENCY
■	4"x4" CONCRETE MONUMENT LS3238	R	RADIUS DISTANCE
●	SET PERMANENT REFERENCE MONUMENT	R/W	RIGHT-OF-WAY
●	5/8" IRON ROD & CAP STAMPED "PRM LB7344"		
▲	PERMANENT CONTROL POINT		
CA	CENTRAL ANGLE		
CB	CHORD BEARING		
CD	CHORD DISTANCE		
C/L	CENTERLINE		
L	ARC LENGTH		
NT	NOT TANGENT		
O.R.B.	OFFICIAL RECORDS BOOK		
PC	POINT OF CURVATURE		



SOUTHWEST CORNER OF SECTION 27, TOWNSHIP 41 SOUTH, RANGE 42 EAST, FOUND PALM BEACH COUNTY BRASS DISK N=922539.106 E=935050.661